

halyard blocks

HALYARD BLOCKS

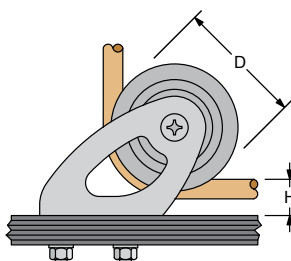
This solution, designed for halyards at the base of the mast, keeps the line as close to the deck as possible. A-316 s.steel base.
All these models are fitted with double side ball bearings.



Mod. 815.090

Mod. 815.075

Mod. 815.652



| MODEL | Ø LINE mm | D mm | H mm | SWL kg | WEIGHT kg | BOLTS N° x Ø mm |
|---------|-----------|------|------|--------|-----------|-----------------|
| 815.452 | 10 | 45 | 14 | 450 | 0.08 | 2 x Ø5 |
| 815.552 | 12 | 55 | 16 | 600 | 0.12 | 2 x Ø6 |
| 815.652 | 12 | 65 | 18 | 800 | 0.17 | 2 x Ø8 |
| 815.075 | 14 | 75 | 22 | 1500 | 0.26 | 2 x Ø8 |
| 815.090 | 16 | 90 | 24 | 2500 | 0.39 | 2 x Ø10 |
| 815.120 | 18 | 120 | 32 | 4500 | 1.20 | 4 x Ø10 |
| 815.150 | 20 | 150 | 41 | 6500 | 3.30 | 4 x Ø12 |
| 815.180 | 24 | 180 | 51 | 9000 | 4.70 | 4 x Ø16 |

MAXI BLOCK D=300 mm

Working load = **30.000 kg**

Weight = 48,50 kg

Custom made for Perini Navi

AISI 316 CUSTOM PRODUCTS

Custom s.steel products are available on request.



655 mm



Perini Navi - State of Grace 40 m

hollow pin deck blocks

HOLLOW PIN DECK BLOCK 75, 90, 120 mm

The sheave rotates on a hollow pin with the line passing through the pin's centre.

This type of arrangement reduces the height of the line off the deck, and the side loads on the block.

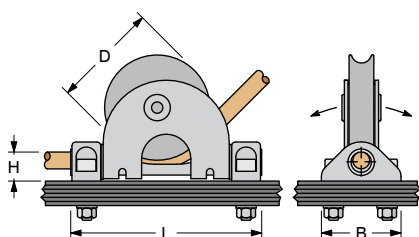
The line position and its direction to the winch does not change, even when the sheave is articulated off-centre.

Body completely made in polished s.steel. Sheave on Composite Fibre bearing and two side ball bearing.



Mod. 816.075

Mod. 816.090



| MODEL | Ø LINE mm | D mm | H mm | L mm | B mm | SWL kg | WEIGHT kg | BOLTS N° x Ø mm |
|---------|-----------|------|------|------|------|--------|-----------|-----------------|
| 816.075 | 12 | 75 | 20 | 132 | 60 | 1500 | 0.62 | 4 x Ø8 |
| 816.090 | 14 | 90 | 24 | 157 | 66 | 2500 | 1.15 | 4 x Ø10 |
| 816.120 | 18 | 120 | 32 | 190 | 80 | 4500 | 1.95 | 4 x Ø12 |

HOLLOW PIN DECK BLOCK 150, 180 mm

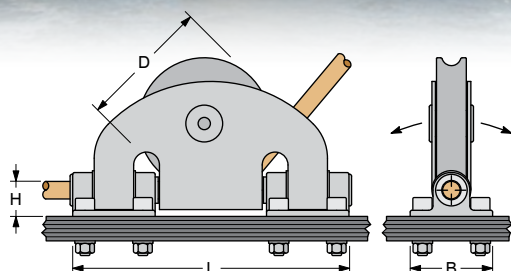
The larger models with 150 and 180 mm sheaves are equipped with a double base, where each base is fixed with 4 screws.



Mostes 55



Mod. 816.150



| MODEL | Ø LINE mm | D mm | H mm | L mm | B mm | SWL kg | WEIGHT kg | BOLTS N° x Ø mm |
|---------|-----------|------|------|------|------|--------|-----------|-----------------|
| 816.150 | 20 | 150 | 30 | 315 | 94 | 6500 | 5.70 | 8 x Ø10 |
| 816.180 | 22 | 180 | 33 | 373 | 108 | 9000 | 8.70 | 8 x Ø12 |

opf hollow pin blocks

HOLLOW PIN DECK BLOCK

The sheave rotates on a hollow pin with the line passing through the pin's centre.

This type of arrangement reduces the height of the line off the deck, and the side loads on the block.

The line position and its direction to the winch does not change, even when the sheave is articulated off-centre.

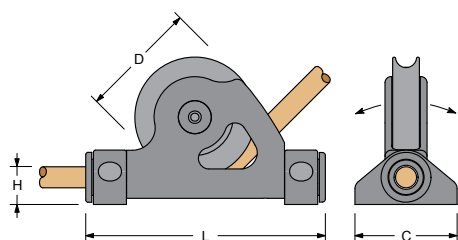
Body completely made in hard black anodized aluminium.

Sheave on Composite Fibre bearing and two side ball bearing.

Insulating washer under the fixing screws.



Mod. 00821



| MODEL | Ø LINE mm | D mm | H mm | L mm | C mm | SWL kg | WEIGHT kg | BOLTS N° x Ø mm |
|-------|-----------|------|------|------|------|--------|-----------|-----------------|
| 00621 | 12 | 60 | 19 | 121 | 57 | 1300 | 0.28 | 4 x Ø6 |
| 00821 | 14 | 80 | 25 | 160 | 68 | 2200 | 0.49 | 4 x Ø8 |
| 01021 | 16 | 100 | 29 | 196 | 79 | 3500 | 0.84 | 4 x Ø10 |

HOLLOW PIN DECK BLOCK WITH CAM-CLEAT

The smallest model with 60 mm sheave is also available with a Cam-Cleat, adjustable to three positions.



Mod. 00621/C

| MODEL | Ø LINE mm | D mm | H mm | L mm | C mm | SWL kg | WEIGHT kg | BOLTS N° x Ø mm |
|---------|-----------|------|------|------|------|--------|-----------|-----------------|
| 00621/C | 12 | 60 | 19 | 121 | 57 | 1300* | 0.39 | 4 x Ø6 |

* Max load on Cam-Cleat is 150 kg.

