

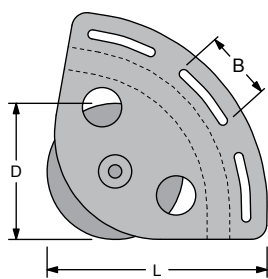
mainsail blocks

CLEW BLOCKS

Solution designed to solve the connection of a sheave to the furling mainsail clew efficiently. The block is contained within the size of the sail, thus allowing a larger surface of the mainsail to be used.

The choice of materials guarantees the least weight as well as a very good mechanical resistance to the environment. Particular care has been taken over the ease of connection which is obtained by normal "webbing". This ensures moreover a very good distribution of the load on the sail.

MATERIALS: Cheek plates are made of anodized aluminium. Also polished s. steel solutions are available on request.



MODEL	Ø LINE mm	D mm	L mm	B mm	SWL kg	WEIGHT kg
991.073	14	70	112	3 x 36	1000	0.23
991.093	16	90	145	3 x 46	2000	0.45
991.124	18	120	190	4 x 46	3000	1.04
991.154	20	150	225	4 x 52	4000	2.05
991.184	24	180	265	5 x 52	8000	2.65

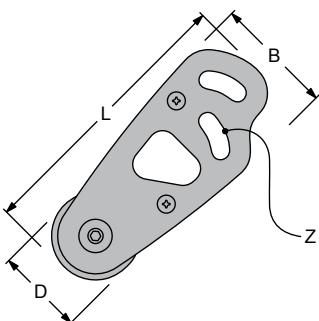
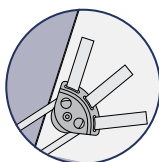
REEF BLOCKS

The blocks are connected to the leech of the mainsail with webbing, and reduce point loading on the mainsail when reefing. The small diameter sheaves are suitable to very high loads.

The center hole can be used as a safety connection to the boom when reefed.

The small version (D=50 mm) is for boats to 50 ft, larger (D=120 mm) for boats to 100 ft.

If a larger sheave is required and if higher weight and larger sizes are acceptable, then the clew blocks described above can be considered.



MODEL	Ø LINE mm	D mm	L mm	B mm	Z mm	SWL kg	WEIGHT kg
994.055	14	50	143	65	20	1500	0.22
994.065	16	60	178	79	20	3000	0.37
994.075	18	70	204	88	25	4500	0.70
994.085	20	80	238	112	35	5500	0.90
994.095	24	100	292	140	45	8000	1.30
994.125	28	120	357	170	60	10000	2.90